



SCHOOL *of* MEDICINE
THE BOWMAN GRAY CAMPUS

Program Definition for Environmental Prevention:
Lessons from the Enforcing Underage
Drinking Laws Community Trial (EUDL CT)

Mark Wolfson, Ph.D.
Kimberly Wagoner, MPH
Barbara Alvarez Martin, MPH

**Funding provided by the
Office of Juvenile Justice and Delinquency Prevention**

**National Leadership Conference
Nashville, TN
August 2008**



Overview of Presentation

- Program Definition
 - Prescriptiveness versus Flexibility
- EUDL Discretionary Grant (DG) Program
 - Early EUDL DG Program
 - EUDL Community Trial
- Were Sites Successful in Meeting Grant Requirements?
- Discussion



Program Definition

- Advantages of Flexibility
- Advantages of Prescriptiveness



Potential Advantages of *Flexible* Program Definition

- The federal government is too far removed from the people and too rigid to best design programs
- Decisions made at the lowest feasible level of government will result in the most efficient allocation of resources
- Greater local buy in

Adapted from Corbett, 1995



Potential Advantages of *Prescriptive* Program Definition

Prescriptiveness

- Categorical programs target scarce resources more effectively
- Local and state officials can more easily blame higher levels of government for program problems and failures
- Expertise in program areas is better developed and more easily shared if the ultimate responsibility is located in the federal government
- The federal government is too far removed from the people and too rigid to best design or manage programs
- Decisions made at the lowest feasible level of government will result in the most efficient allocation of resources
- Consistent with the movement towards evidence based practice and accountability

Adapted from Corbett, 1995

EUDL Funding to States and Local Communities

Appropriation: \$25 Million Per Fiscal Year	Block Grants: \$18.36 M Total \$360,000 / State	Discretionary Grants (DG):	Special Focus for Discretionary Grants:
1998	50 States & DC	10 States \$400,000 / State	
1999	50 States & DC	7 States \$400,000 / State	
2000	50 States & DC	11 States \$400,000 / State	
2001	50 States & DC	8 States \$400,000 / State	
2002	50 States & DC	5 States \$400,000 / State	
2003	50 States & DC	5 States \$960,000 / State	Randomized Community Trial
2004	50 States & DC	4 States \$1,050,000 / State	Rural Community Trial
2005	50 States & DC	3 States \$1,050,000 / State	Rural Community Trial
2006	50 States & DC	4 States \$1,000,000 / State	Air Force Initiative

Program Definition in EUDL

State Block Grants

- Activities that could be funded (OJJDP 1998 Guidelines):
 - “Statewide task forces of State and local law enforcement and prosecutorial agencies to target establishments”
 - “Public advertising programs”
 - “Innovative programs to prevent and combat underage drinking”

Summarized from 1998 EUDL Block Grant Guidelines

Program Definition in EUDL (cont.)

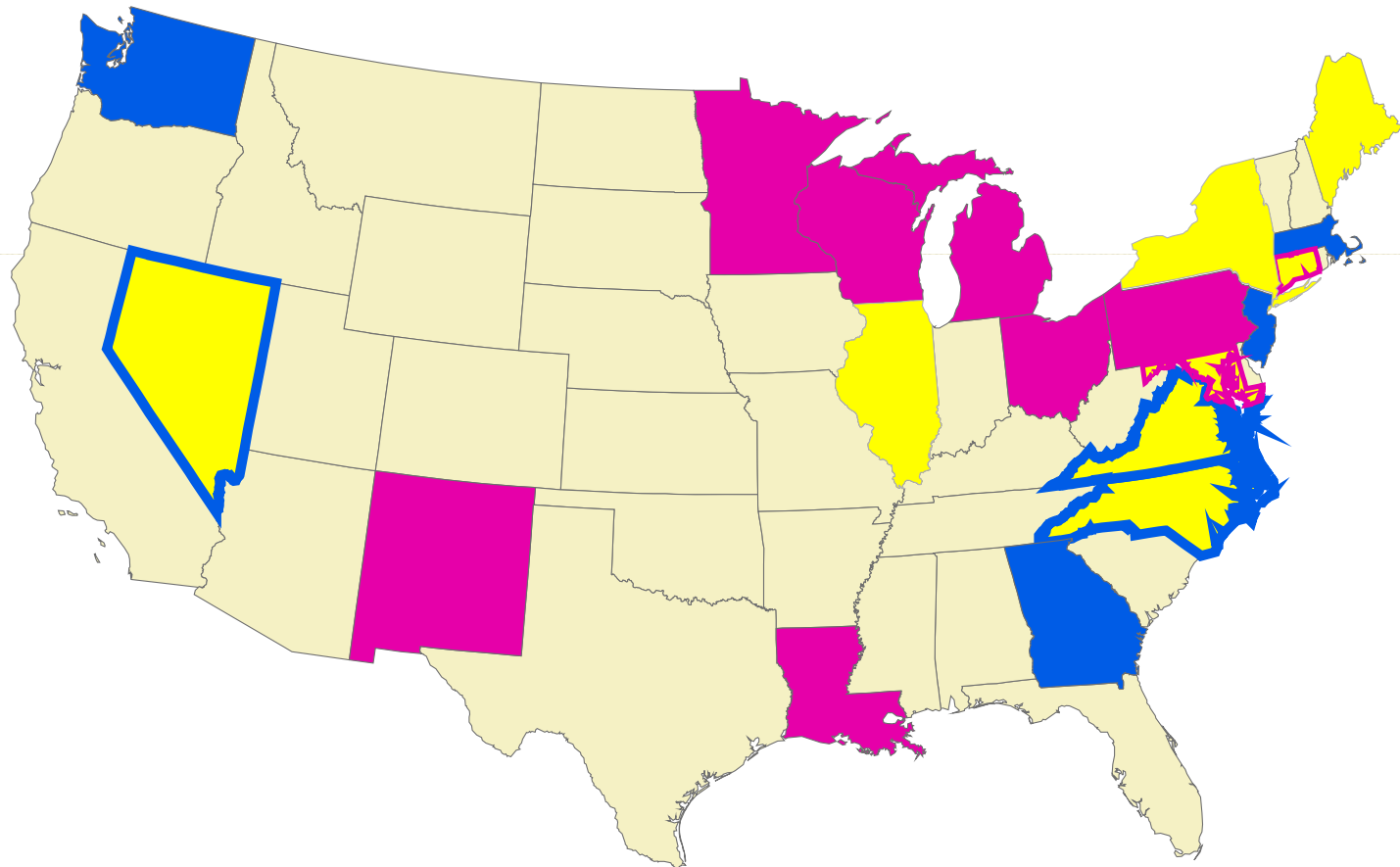
Early Discretionary Grant Program (FY 1998–2002)

- Establish/enhance comprehensive community programs...with a special emphasis on increasing law enforcement activity with regard to sale of alcohol to minors
- Encourage youth leadership
- Develop and implement strategies that coordinate State-level planning and program activity
- Ensure that there is a local EUDL program coordinator in each local site*
- Develop a strategic plan to direct EUDL program activity*
- Increase enforcement commitment and involvement*

Summarized from 1998-2002 EUDL Discretionary Grant Solicitations

**Added in 2000 or later*

Round 1, 2, & 4 DG Recipients



Round 1

Round 2

Round 4

Round 1&4

Round 2&4



Evaluation of the Early EUDL Discretionary Grant Program Summary of Findings

- EUDL appears to have galvanized substantial activity and new relationships
 - Lead Agency Involvement in the Underage Drinking (UAD) Issue
 - Coordination, Enforcement
 - State Juvenile Justice, Law Enforcement, Substance Abuse Agencies, Local Lead Agencies



Summary of Evaluation Findings (cont.)

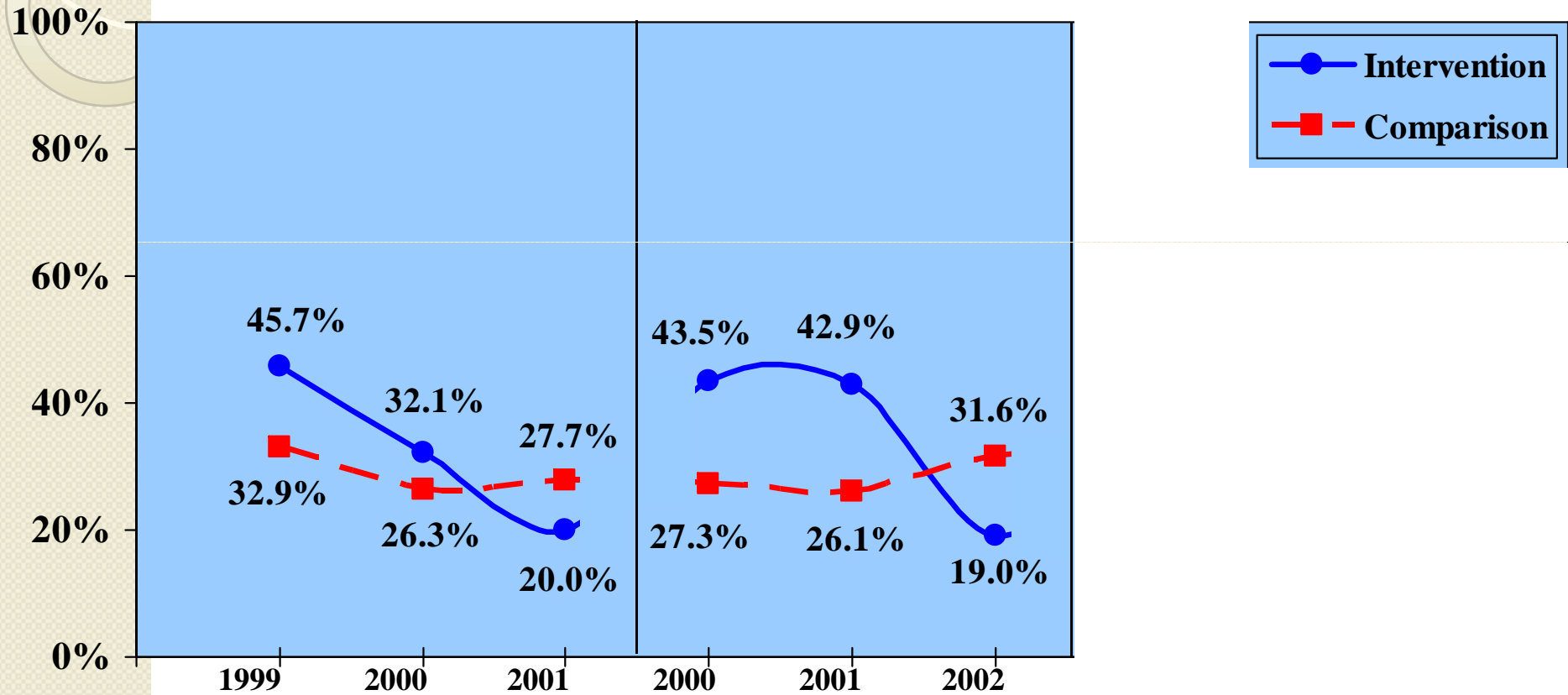
- Impact on Enforcement Practices
 - EUDL increased or maintained priority of UAD enforcement in a time of increased competing demands
 - Round-specific evidence of increases in compliance checks
- Youth Behavior: No Consistent Evidence of Impact

Why might a Program Evaluation not show an impact on behavior?

- **Delayed, Incomplete, or Failed Program Implementation**
- **Flawed Program Theory**
- **Short Intervention Period**
- **Secular Trends**
- **Competing Programs**
- **Non-comparable Intervention and Comparison Groups**
- **Measurement Error**
- **Use of Wrong Measures**
- **Inadequate Statistical Power**

Adapted from Lipsey and Cordray, 2000

Percentage of Agencies Reporting Strong Local Support for Underage Drinking Efforts



Round 1
p-value = 0.244

Round 2
p-value = 0.914

Round 1 Sample: N = 64-81 Local Law Enforcement Agencies (LEAs) in 9 States receiving EUDL Discretionary Grants

Round 2 Sample: N = 18-22 Local LEAs in 7 States receiving EUDL Discretionary Grants

Round 4 Sample: N = 36-48 Local LEAs in 8 States receiving EUDL Discretionary Grants

PRELIMINARY



Randomized Community Trial

- Rationale
 - Natural Progression for Program
 - Focus on Best and Most Promising Practices
 - Randomized Community Trial Design



**Version 2:
EUDL Randomized
Community Trial**

U.S. Department of Justice
Office of Justice Programs
Office of Juvenile Justice and Delinquency Prevention



Enforcing the Underage Drinking Laws (EUDL) Discretionary Program: Community Trials Initiative

**Fiscal Year 2003
Solicitation**

Registration Deadline: June 23, 2003
Applicants must start their online applications on GMS.

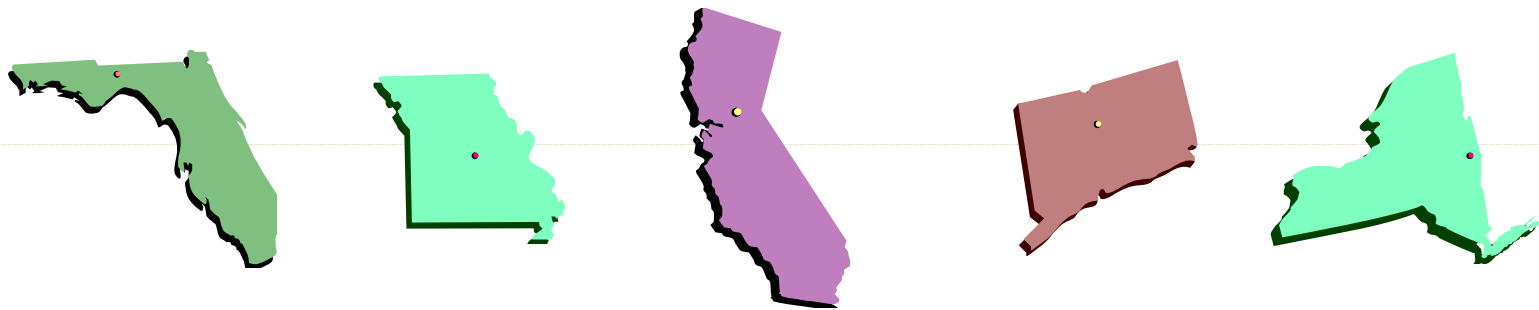
Application Deadline: July 3, 2003
Applications must be submitted online.

Office of Justice Programs

Office of Juvenile Justice and
Delinquency Prevention
www.ojp.usdoj.gov/ojjdp

Community Trial Design

5 States



- 14 Communities

Randomly
Assigned

- 7 Intervention



7 Comparison



Community Trial: Intervention

- **Resources**

- State Manager
- Local Funding (~\$125,000 per site)
 - Local Coalition Coordinator
 - Program Funds for a Coalition
- TA and Training (Pacific Institute for Research and Evaluation)
- Feedback Data from the Evaluation (Wake Forest University School of Medicine)



EUDL CT Grant Requirements

1. Conduct at least **two compliance checks** in at least 90% of off-premise outlets each year, for 2 years
2. Conduct at least one **DWI enforcement** operation
3. Conduct at least one “**social availability**” enforcement operation
4. Adopt/improve one local **policy**



Methods for Assessing Sites' Success in Meeting Grant Requirements

- Compliance check tracking worksheet
- Web-based Activity Tracking monthly log:
 - Policy-related activities
 - Social availability operations
 - DWI enforcement operations
- Site visits
 - Cross-check activities

Web-based Activity Tracking Log

http://152.11.144.104/ojdp/act.cfm - Microsoft Internet Explorer

File Edit View Favorites Tools Help

Back Forward Stop Home Search Favorites

Address http://152.11.144.104/ojdp/act.cfm Go

Which Community Trial objective is this activity related to for March 2004?

Community Trial Objective	When do I fill this out?	Date of last activity entered
1. Policy change	As activities occur	
2. Compliance checks	Only once per month	
3. Other enforcement action	Only once per month	
4. DWI enforcement action	Only once per month	
Other general activity	As activities occur	

If you need to update your **Governing Board member list**

Done

Data Entry Form - tracking - Generated by DYNAFORM - Microsoft Internet Explorer

File Edit View Favorites Tools Help

Back Forward Stop Home Search Favorites

Address http://152.11.144.104/ojdp/policy.cfm?userid=ggarner&month=March&year=2004

Policy Change Activities for March 2004 Please fill out a new form for each activity

When did this activity take place? Over which

Which specific policy is this activity related to? (Check all that apply. Please indicate)

	Public Policy	Institutional Policy
Zoning (outlet locations, density)	<input type="radio"/>	<input type="radio"/>
Hours of sale for alcohol	<input type="radio"/>	<input type="radio"/>
Entry into bars/nightclubs by persons under 21	<input type="radio"/>	<input type="radio"/>
Driver's license scanners	<input type="radio"/>	<input type="radio"/>
Keg registration laws or ordinances	<input type="radio"/>	<input type="radio"/>
Alcohol at community festivals, events	<input type="radio"/>	<input type="radio"/>
Alcohol industry sponsorship of public events	<input type="radio"/>	<input type="radio"/>
Conditional use permits	<input type="radio"/>	<input type="radio"/>

Compliance Check Tracking Sheet

EUDL CT Grant Objective: Conduct At Least Two Compliance Checks in At Least 90% Off-Premise Alcohol Outlets

Quarterly Reporting Period:	2004 October - December	Comments Box =>	For the quarter, 55% (6 out of 11) of the off-premise alcohol outlets (Outlets) have had one compliance check (CC); 3 have had at least two CCs. To reach the 90% goal of conducting at least two CCs in 90% of the Outlets, 4 Outlets need to have the first and second CC and 3 need to have the second CC, only.
Site:	Manteca (Select Site)		

I. Dates:
Note: This section is write-protected except for cell K7 where the Beginning Date can be entered.

Beginning Date: 7/1/2004 **Ending Date:** 6/30/2005

II. Grant Requirement Statistics:
Note: This section is write-protected, data entry is prohibited.

Year 1 Description	Count (N)	% of Total	Goal	# to Reach Goal
Total # of Businesses	11	100%		
90% of Businesses	10	90%		
Total # Checked Once	6	55%	90% (min)	4
Total # Checked Twice	3	27%	90%	7

III. Business Detail: Note: This section is write-protected in the shaded areas and row 15.

New or Closed?	Exclude New or Closed?	ID	Included in Total	Off-Premise Business Name	Address	City	State	Zip	Date of 1st_CC	Date of 2nd_CC	*Date of 3rd_CC	*Date of 4th_CC	Include in 1st CC	Include in 2nd CC
Begin on row 16.		Protected Columns									*Not Included in 90%		Protected Columns	
	Exclude	1		Stop and Go Clemmons	123 Any Street	Clemmons	CA	99999	7/14/2004	7/14/2004	10/31/2004	#####		
		2	YES	7-11 Lewisville					7/1/2004				YES	
		3	YES	Harris Teeter Kernersville										
		4	YES	Bob's Package Store					8/10/2004	7/1/2004	8/31/2005		YES	YES
		5	YES	Park Shell										
		6	YES	River Park Shell					10/17/2004				YES	
Closed		7	YES	Food Lion - King										
		8	YES	Triangle Exxon					12/31/2004	3/31/2005	8/31/2005		YES	YES
		9	YES	Lowes Food Stanleyville										
		10	YES	Mad Dog										
		11	YES	Liquor is Quicker					9/30/2004				YES	
New	Exclude	12		Cirrhosis in a Bottle					3/31/2005	5/30/2005				
		13	YES	Hangover Waiting to Happen					4/4/2005	6/4/2005			YES	YES
New	Exclude	14		DUI: Drink Until Intoxicated					5/31/2005	6/30/2005				

Site visit transcripts

YOUTH-CT PROJECT: YORKTOWN and CORTLAND, NEW YORK
INTERVIEW: Cathy Adler, Coalition Coordinator
Tape #7 B

English transcription by LHS-H. This tape was very hard to hear and required several pass-throughs to catch as much as possible. Voices were muffled and fast and slowing it down only distorted the voices, so I left blanks rather than guess at what might have been said. Discourse markers (you know, kind of, I mean, uh,) were eliminated so as not to interrupt continuity. Ellipses indicate a break in thought or incomplete sentence.

I: = Interviewer (Male)
R: = Respondent (Female), Cathy Adler

I: And I think what we'll do if this will work okay, is to do kind of a quick back-and-forth from Yorktown to Cortland to Yorktown.

R: Uh hm.

I: Okay. So, we're here to see what's happened since the last time we were here, so you had some more time on your grant . . . since you ended this around August?

R: Yeah, and you guys were here in March.

I: Right, and when, of course, we're very interested in the sustainability issue and so . . . what's the other reason that we want to talk. So, why don't we start with that? Because . . . well, . . . do you want us to start talking about how the grant finished off?

R: It went very tidy and everybody got up to speed fairly early on. That was not an issue. If anything, I think, the Police force was a bit disappointed that it didn't keep going. Of course, we could understand. . .

I: So, they were disappointed, especially in the funding.

R: Sure that's always an issue.

I: Right, so, talk to me a little bit about how things have developed since the end of the grant.

R: I . . . well, we started a bunch of different things at the end of that the Coalition does. We developed a non-profit to oversee the financial

I: So you're talking Yorktown.

R: Uh hm. Yorktown, yeah.

I: Okay. Got it!

R: So, we just . . . working Coalition with the Alliance for Safe Kids, and just looking at the impact right now on working . . . community grants for both towns, and it will go through the Alliance for Safe Kids rather than the Town this time. We're starting up a Youth Court within the next few months. The Adopt-a-Store Program is still going full force and it's . . .

I'm trying to think . . . the Heart to Heart Program is . . . actually, I think it's going better than I think anybody anticipated. A bunch of different towns are picking it up and flyers in the towns with local contact information on the appropriate town.

I: Just to back up on the non-profit, can you talk a little bit about that? The impetus for that?

R: Sure. It was the fact that . . . whenever we were doing fund-raisers and any kind of event, of course, the question was "Well, what do we do with the money?" If we are going through the Town's coffers, then you got a problem with . . . with general funds, and trying to separate out that . . . we work with another local non-profit, which is what we've done in the past, but, then, you have an issue of "What line are they going to focus on overseeing the correct use of your funds, when it's actually not their . . ."

I: So was getting very awkward. So we decided that it was . . . a non-profit.

R: So when did that happen?

I: And the paperwork, I'm going to say March and then . . . in May.

I: Idea of that being useful for carrying forward the . . . after the grant ended, did that factor into it? . . . your thoughts?



How successful were the sites in meeting the requirements?????

Compliance Check Reporting by state, year and round of operation

State	Year 1 Compliance Checks		Year 2 Compliance Checks	
	1st 90%	2nd 90%	1st 90%	2nd 90%
State 1	6/6 (100%)	4/6 (67%)	6/6 (100%)	5/6 (83%)
State 2	7/7 (100%)	7/7 (100%)	7/7 (100%)	7/7 (100%)
State 3	6/7 (86%)	4/7 (57%)	6/7 (86%)	6/7 (86%)
State 4	7/7 (100%)	4/7 (57%)	7/7 (100%)	3/7 (43%)
State 5	7/7 (100%)	7/7 (100%)	7/7 (100%)	7/7 (100%)

Compliance Checks

24 of 34 sites (71%) met requirement to check 90% of stores twice each year

State 1	Site #1	Yes	✓	✓	✓	✓
	Site #2	Yes	✓	✓	✓	✓
	Site #3		✓		✓	✓
	Site #4	Yes	✓	✓	✓	✓
	Site #5		✓		✓	
	Site #6	Yes	✓	✓	✓	✓
State 2	Site #1	Yes	✓	✓	✓	✓
	Site #2	Yes	✓	✓	✓	✓
	Site #3	Yes	✓	✓	✓	✓
	Site #4	Yes	✓	✓	✓	✓
	Site #5	Yes	✓	✓	✓	✓
	Site #6	Yes	✓	✓	✓	✓
	Site #7	Yes	✓	✓	✓	✓
State 3	Site #1	Yes	✓	✓	✓	✓
	Site #2	Yes	✓	✓	✓	✓
	Site #3	Yes	✓	✓	✓	✓
	Site #4	Yes	✓	✓	✓	✓
	Site #5		✓		✓	✓
	Site #6		✓		✓	✓
	Site #7				✓	✓
State 4	Site #1	Yes	✓	✓	✓	✓
	Site #2		✓	✓	✓	
	Site #3	Yes	✓	✓	✓	✓
	Site #4		✓		✓	
	Site #5		✓		✓	✓
	Site #6		✓		✓	
	Site #7		✓	✓	✓	
State 5	Site #1	Yes	✓	✓	✓	✓
	Site #2	Yes	✓	✓	✓	✓
	Site #3	Yes	✓	✓	✓	✓
	Site #4	Yes	✓	✓	✓	✓
	Site #5	Yes	✓	✓	✓	✓
	Site #6	Yes	✓	✓	✓	✓
	Site #7	Yes	✓	✓	✓	✓

DWI

30 of 34
sites (88%)

met
requirement
to conduct at
least one
DWI
enforcement
operation

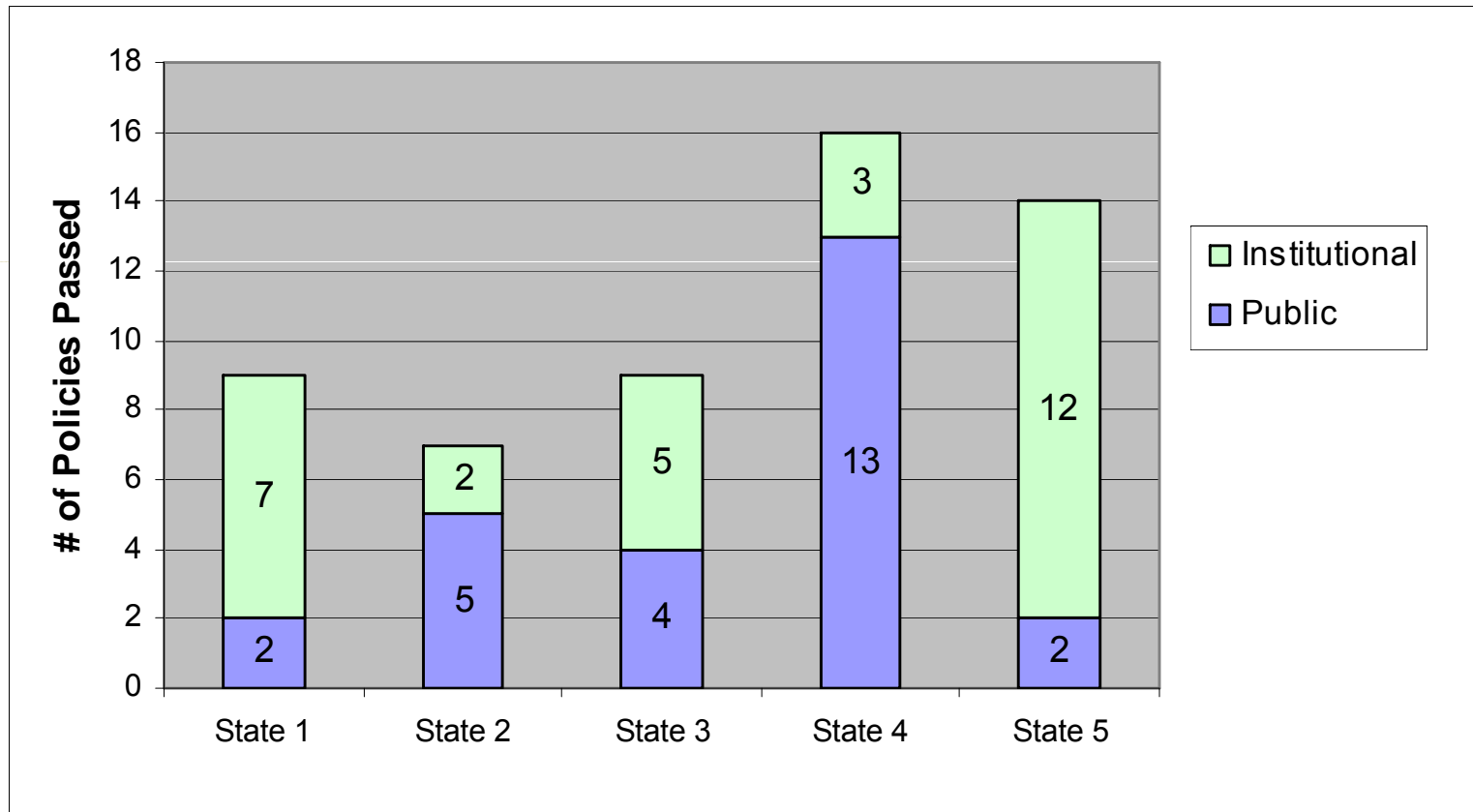
State	City	Met?	Emphasis Patrol	Sobriety Checkpoint
State 1	Site #1	Yes	✓	✓
	Site #2	Yes		✓
	Site #3	Yes		✓
	Site #4	Yes	✓	✓
	Site #5			
	Site #6	Yes	✓	✓
State 2	Site #1			
	Site #2	Yes		✓
	Site #3	Yes	✓	✓
	Site #4	Yes	✓	
	Site #5	Yes	✓	
	Site #6	Yes	✓	
	Site #7			✓
State 3	Site #1	Yes	✓	
	Site #2	Yes		✓
	Site #3	Yes	✓	
	Site #4	Yes	✓	
	Site #5	Yes	✓	
	Site #6	Yes	✓	✓
	Site #7	Yes	✓	
State 4	Site #1	Yes		✓
	Site #2	Yes	✓	
	Site #3	Yes	✓	
	Site #4			
	Site #5	Yes	✓	
	Site #6	Yes		✓
	Site #7	Yes		✓
State 5	Site #1	Yes	✓	✓
	Site #2	Yes	✓	✓
	Site #3	Yes		✓
	Site #4	Yes		✓
	Site #5	Yes		✓
	Site #6	Yes	✓	
	Site #7	Yes	✓	✓

Social Availability

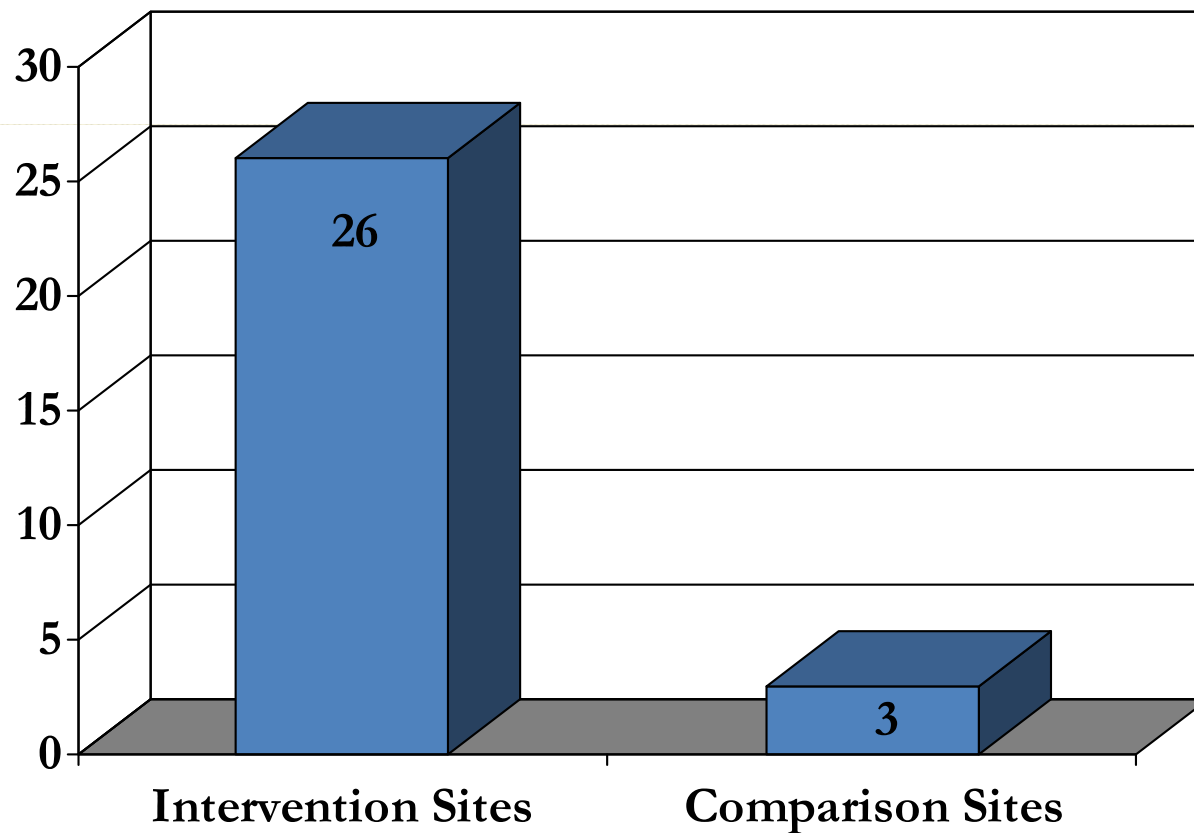
31 of 34 sites (91%) met requirement to conduct at least one social availability enforcement operation

State	City	Met?	Parking Lots	Shoulder Taps	Party Patrols
State 1	Site #1	Yes	✓	✓	✓
	Site #2	Yes	✓	✓	✓
	Site #3	Yes		✓	✓
	Site #4	Yes	✓		✓
	Site #5	Yes		✓	
	Site #6	Yes	✓	✓	
State 2	Site #1	Yes	✓		
	Site #2	Yes	✓		✓
	Site #3	Yes	✓		✓
	Site #4				
	Site #5				
	Site #6	Yes	✓		✓
	Site #7	Yes	✓		✓
State 3	Site #1	Yes	✓		✓
	Site #2	Yes	✓		✓
	Site #3	Yes		✓	✓
	Site #4	Yes	✓	✓	
	Site #5	Yes			✓
	Site #6	Yes			✓
	Site #7	Yes			✓
State 4	Site #1				
	Site #2	Yes	✓		
	Site #3	Yes			✓
	Site #4	Yes		✓	✓
	Site #5	Yes			✓
	Site #6	Yes			✓
	Site #7	Yes			✓
State 5	Site #1	Yes	✓		✓
	Site #2	Yes			✓
	Site #3	Yes			
	Site #4	Yes	✓		✓
	Site #5				
	Site #6	Yes			✓
	Site #7	Yes			✓

Number & Types of Policies Passed



Public Policies Passed (Intervention and Comparison Communities)



Policy

29 of 34 sites
(85%) met requirement to adopt or improve at least one policy

State	City	Met?	Public Policy	Institutional Policy
State 1	Site #1			
	Site #2			
	Site #3	Yes		✓
	Site #4	Yes		✓
	Site #5	Yes	✓	
	Site #6	Yes		✓
State 2	Site #1	Yes	✓	
	Site #2	Yes	✓	
	Site #3	Yes	✓	
	Site #4	Yes		✓
	Site #5			
	Site #6	Yes	✓	✓
	Site #7			
State 3	Site #1	Yes	✓	
	Site #2	Yes	✓	✓
	Site #3	Yes		✓
	Site #4	Yes		✓
	Site #5	Yes		✓
	Site #6	Yes	✓	
	Site #7	Yes		✓
State 4	Site #1	Yes	✓	
	Site #2	Yes		✓
	Site #3	Yes	✓	
	Site #4	Yes	✓	
	Site #5	Yes	✓	
	Site #6	Yes	✓	✓
	Site #7	Yes	✓	✓
State 5	Site #1	Yes	✓	✓
	Site #2	Yes		✓
State 5	Site #3	Yes		✓
	Site #4	Yes		✓
	Site #5	Yes		✓
	Site #6			
	Site #7	Yes		✓



Types of **public** policies passed/amended

- **Social host:** 8 policies
- **Minor Possession/Intoxication:** 5 policies
- **Provider:** 3 policies
- **Rezoning:** 2 policies
- **Hours of sale:** 2 policies
- **Prohibited at Event:** 2 policies
- **Other local:** 1 policy
- **Keg restrictions:** 1 policy
- **Conditional Use Permit:** 1 policy
- **Entry 21:** 1 policy

Types of **institutional** policies adopted

- **Scanners:** 7 policies
- **Law enforcement policy:** 6 policies
- **School policy:** 5 policies
- **Retailer penalties:** 5 policies
- **DWI:** 3 policies
- **Provider:** 1 policy

EUDL CT:

16 of 34 sites
(47%) met
all grant
requirements

State	City	Met all?	CC	DWI	SA	Policy
State 1	Site #1		✓	✓	✓	
	Site #2		✓	✓	✓	
	Site #3			✓	✓	✓
	Site #4	Yes	✓	✓	✓	✓
	Site #5				✓	✓
	Site #6	Yes	✓	✓	✓	✓
State 2	Site #1		✓		✓	✓
	Site #2	Yes	✓	✓	✓	✓
	Site #3	Yes	✓	✓	✓	✓
	Site #4		✓	✓		✓
	Site #5		✓	✓		
	Site #6	Yes	✓	✓	✓	✓
	Site #7		✓		✓	
State 3	Site #1	Yes	✓	✓	✓	✓
	Site #2	Yes	✓	✓	✓	✓
	Site #3	Yes	✓	✓	✓	✓
	Site #4	Yes	✓	✓	✓	✓
	Site #5			✓	✓	✓
	Site #6			✓	✓	✓
	Site #7			✓	✓	✓
State 4	Site #1	Yes	✓	✓	✓	✓
	Site #2			✓	✓	✓
	Site #3	Yes	✓	✓	✓	✓
	Site #4				✓	✓
	Site #5			✓	✓	✓
	Site #6			✓	✓	✓
	Site #7			✓	✓	✓
State 5	Site #1	Yes	✓	✓	✓	✓
	Site #2	Yes	✓	✓	✓	✓
	Site #3	Yes	✓	✓	✓	✓
	Site #4	Yes	✓	✓	✓	✓
	Site #5		✓	✓		✓
	Site #6		✓	✓	✓	
	Site #7	Yes	✓	✓	✓	✓

Number of Sites Meeting Grant Requirements

	Compliance Checks		DWI Enforcement		Social Availability		Policy Change	
	Met 90% goal in Y1 & Y2	%	Conducted one or more operations	%	Conducted one or more operations	%	Adopted/amended one or more policies	%
CA	4/6	67%	5/6	83%	6/6	100%	4/6	67%
CT	7/7	100%	5/7	71%	5/7	71%	5/7	71%
FL	4/7	57%	7/7	100%	7/7	100%	7/7	100%
MO	2/7	29%	6/7	86%	7/7	100%	7/7	100%
NY	7/7	100%	7/7	100%	6/7	86%	6/7	86%
Total	24 / 34	71%	30 / 34	88%	31 / 34	91%	29 / 34	85%



Summary

- 16 of 34 sites met all grant requirements (47%)
- 18 of 34 sites did not (53%)
 - 14 sites fell short on one pillar
 - 4 sites fell short on two pillars
- When sites fell short, it was on:
 - Compliance Checks (10 sites)
 - Policy (5 sites)
 - DWI Enforcement (4 sites)
 - Social Availability Enforcement (3)

What the sites had to say...

I thought it was good because it created some structure.

I prefer operating that way. I like to know what I need to do and when I need to do it.

I think it was important, because when you get a group of people, a small group or a large group, everybody wants to go different ways, but when you tell them, when anybody looks and sees what our goals were and what we had to do, then we could stay focused.

For me, I think it was extremely helpful, because it gave us goals and guidelines and something that we knew we had to get to ... to reach that goal.

I don't know that we would have done as many [compliance checks] if we didn't have a goal saying you have to do this.

What the sites had to say...

We also wanted the education piece – but education wasn't a big piece of the CT grant.

I would have focused a little less on the businesses and a little more on the community. We needed to deal a little less with the commercial and little more with the social.

The hard sell was going into a coalition and saying, "We're going to prepare a needs assessment [and] a strategic plan, and we're going to, as a community, decide what's best for our community."

And then there was a "Oh yeah, by the way, someone from above is telling you, you have to pass this ordinance." It was met by the Town as "You can't tell us what laws we are going to pass!"

More time would have been good. People have to know you're going to be around for a while before they take you seriously.

The background of the slide features a light blue gradient with a faint, semi-transparent image of classical architectural columns on the left side. The columns are white with detailed capitals and fluted shafts. The entire slide is framed by a dark brown border.

Some Open Questions

- Did national partners provide sufficient support & guidance?
- Did States provide sufficient support & guidance?
- Did sites have the capacity to implement?
- What was the impact of these shortfalls?

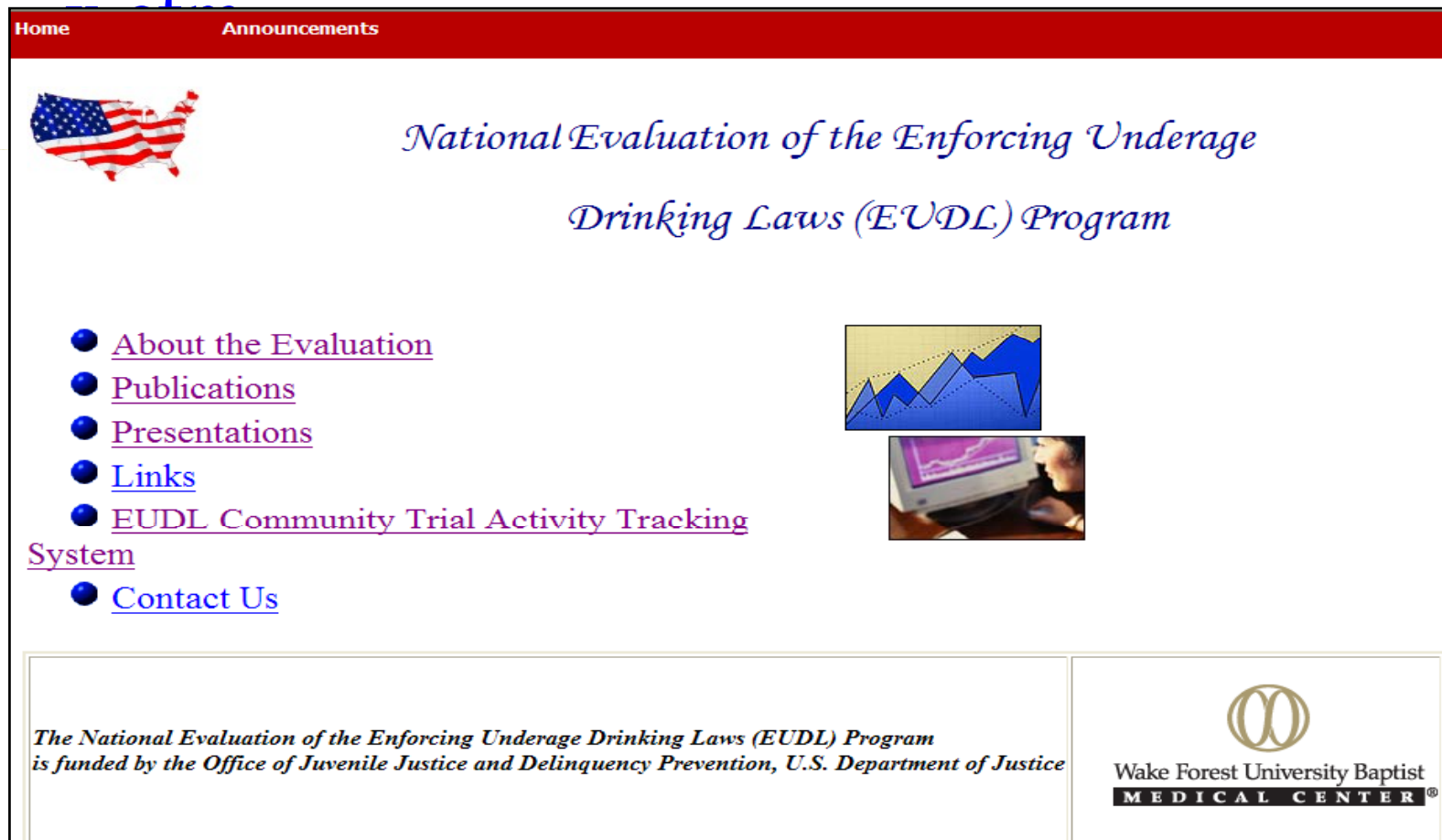
The background of the slide features a light blue gradient with a faint, semi-transparent image of classical architectural columns on the left side. The columns are white with detailed capitals and fluted shafts. The entire slide is framed by a dark brown border.

Questions for You

- What do you think about the EUDL-CT requirements? Were they too ambitious/onerous?
- What has your experience been with prescriptive and flexible program requirements?
- What are the advantages and disadvantages of each?
- Is there an optimal mix of prescriptiveness and local flexibility?


Website

- <http://www.phsapps.wfubmc.edu/eudl2/index.htm>



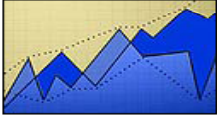
The screenshot shows a website with a red header bar containing the words "Home" and "Announcements". Below the header is a navigation menu with several blue circular icons and text links: "About the Evaluation", "Publications", "Presentations", "Links", "EUDL Community Trial Activity Tracking System", and "Contact Us". The main content area features a map of the United States on the left and the title "National Evaluation of the Enforcing Underage Drinking Laws (EUDL) Program" in the center. To the right of the title are two small images: a blue line graph and a photograph of a person using a computer. At the bottom of the page, there is a footer with text on the left and the Wake Forest University Baptist Medical Center logo on the right.

Home Announcements




*National Evaluation of the Enforcing Underage
Drinking Laws (EUDL) Program*

- [About the Evaluation](#)
- [Publications](#)
- [Presentations](#)
- [Links](#)
- [EUDL Community Trial Activity Tracking System](#)
- [Contact Us](#)



*The National Evaluation of the Enforcing Underage Drinking Laws (EUDL) Program
is funded by the Office of Juvenile Justice and Delinquency Prevention, U.S. Department of Justice*



Wake Forest University Baptist
MEDICAL CENTER®

Expert Survey Methods

- ⊗ Literature review identified experts in UAD research
- ⊗ Practitioner experts were identified using snowball sampling techniques
- ⊗ Web based survey
- ⊗ N = 40
- ⊗ Response rate = 75%

Analysis

Empirical Evidence

Larger Quantity

Smaller Quantity

Perceived Effectiveness

High

Best

- $\geq 50\%$ of experts perceived practice to be highly effective *and* to have high quantity of empirical evidence

Promising

- $\geq 50\%$ of experts perceived practice to be highly effective *but* did **not** perceive high quantity of empirical evidence

Not High

Ineffective

- $\geq 50\%$ of experts perceived practice to **not** be highly effective *and* to have high quantity of empirical evidence

Questionable

- $\geq 50\%$ of experts perceived practice to **not** be highly effective *but* did **not** perceive high quantity of empirical evidence

Findings: Promising Practices

(Continued I)

Local Policy

- ◆ Prohibit Entry of Persons Under 21 into Bars/Nightclubs and Other "Adult" Locations
- ◆ Require or Encourage the Use of Driver's License Scanners
- ◆ Restrict the Availability of Alcohol at Community Festivals and Other Community Events
- ◆ Restrict Alcohol Industry Sponsorship of Public Events
- ◆ Require Conditional Use Permits
- ◆ Ban Concurrent Sales of Alcohol and Gasoline
- ◆ Restrict Alcohol Marketing

Findings: Best Practices

Compliance Checks

- ◆ Conduct Regular Enforcement Actions Involving the Use of Underage Decoys Who Attempt to Purchase Alcohol

DWI Enforcement

- ◆ Enhance Enforcement of Drinking and Driving Laws
- ◆ Conduct Sobriety Checkpoints

Local Policy

- ◆ Restrict Zoning (Outlet Locations and Density)

State Policy

- ◆ Increase Excise Tax
- ◆ Restrict Zoning (Outlet Locations and Density)
- ◆ Enact .08 Blood Alcohol Content Laws for the General Population