

Enforcing Underage Drinking Laws: A Focus on Probation Outreach Strategies



**UDETC
10TH ANNUAL
NATIONAL LEADERSHIP CONFERENCE
(NLC)
Nashville, TN
August 21-23, 2008**



APPA/PIRE EUDL Project



- **Funded by OJJDP**
- **American Probation and Parole Association (APPA) working on a subcontract from PIRE**
- **APPA focusing on probation outreach strategies**
 - Info and resources to effectively supervise underage drinking offenders and adults who supply alcohol to minors
 - Work more effectively with EUDL in states and communities
- **PIRE focusing on judicial outreach strategies**



Session Objectives



- List current practices and policies related to supervising underage drinking offenders and adults who supply alcohol to minors.
- Discuss current research on underage drinking relevant to community corrections practice
- List responses/approaches community corrections agencies may consider implementing to address underage drinking-related offenses
- Describe resources being developed by APPA and PIRE
- Identify ways in which community corrections agencies can work more effectively with the EUDL program in their states and communities



Alcohol Consumption by Youth

(Source: Pacific Institute for Research and Evaluation



July 2007 (www.udect.org/UnderageDrinkingCosts.asp)

- **74% of youth have had at least one drink of alcohol on one or more days during their life**
- **26% of youth had their first drink of alcohol, other than a few sips, before age 13**
- **43% of youth had at least one drink of alcohol on one or more occasion in the past 30 days**
- **26% of youth had 5 or more drinks of alcohol in a row in the past 30 days**
- **4% of youth had at least one drink of alcohol on school property on one or more of the past 30 days**



Consequences of Underage Drinking



- Health and safety
- Academic/cognitive
- Risk to others
- Economic consequences

Health and Safety Consequences



- **Death**
- **DWI fatalities and injuries**
- **Homicide**
- **Suicide**
- **Other injuries—e.g., drowning, burns, and falls**
- **Violence/use of weapons**
- **Other drug use**
- **Risky sexual behavior**
- **Alcohol-related disorders**
- **Other health problems**



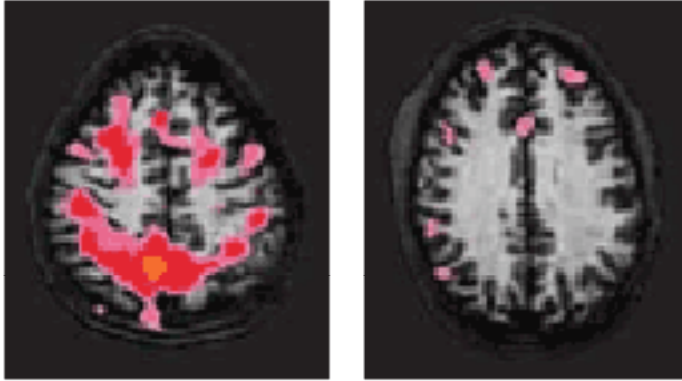
Academic/Cognitive Consequences



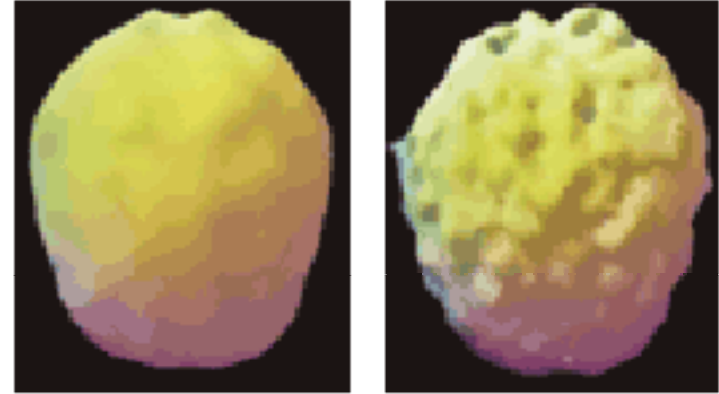
- **Research on adolescent brain—new research shows the adolescent brain continues to develop into a person’s mid to late 20s (Giedd, 2004)**
- **Alcohol has a greater adverse impact on learning and memory-related brain functions in adolescents than adults**
- **Students who use alcohol have higher rates of academic problems and poor performance than nondrinkers**
- **Adolescent alcohol consumption may affect cognitive functioning and/or change the developing brain in ways that increase the risk of future dependence**



Alcohol Effects on Adolescent Brain



These images show functional activity levels in the brain of a healthy 15-year old male nondrinker (left) and that of a 15 year-old male heavy drinker (right).



These SPECT images show functional activity levels in the brain of a healthy nondrinker (left) and that of a sobers 21-year old with a 4-year history of heavy alcohol use. The “holes” indicates reduced brain activity.

Â© Dr. Daniel Amen
www.amenclinic.com



Source: <http://parentsempowered.org/harms/>

Risks to Others



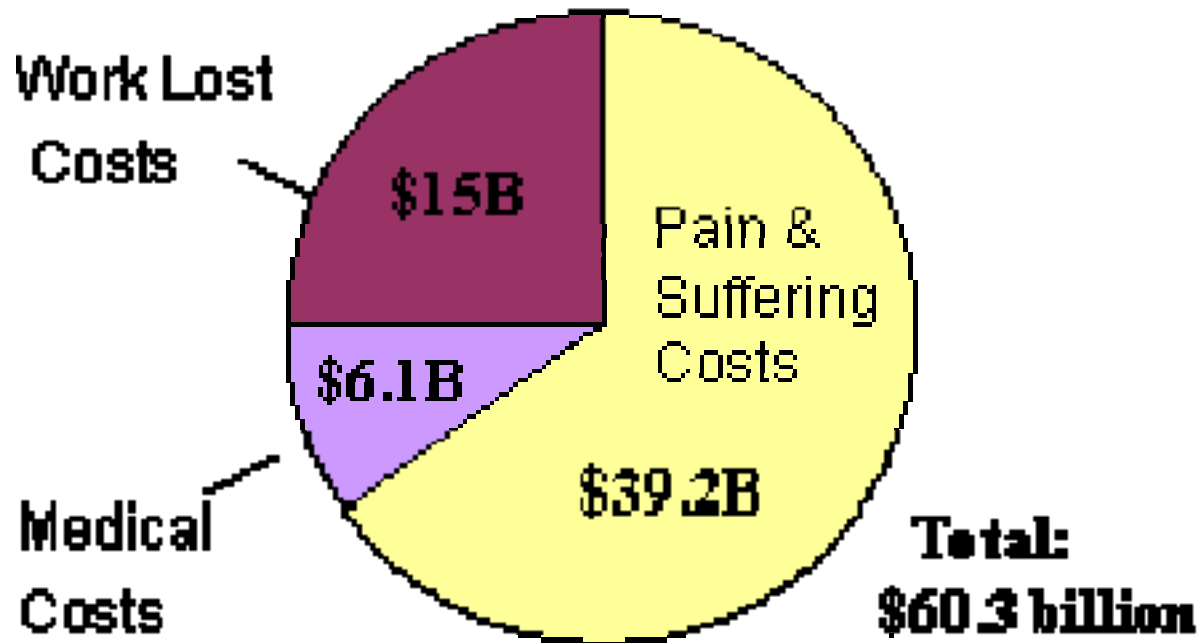
- Loud and unruly behavior
- Being insulted or humiliated by drinkers
- Receiving unwanted sexual advances
- Property destruction
- Unintentional injuries
- 45% of people who die in crashes involving a drinking driver under the age of 21 are people other than the driver (U.S. DOT, 2004)



Economic Consequences



Costs of Underage Drinking United States 2005



Source: PIRE's UDETC Website <http://www.udetc.org/UnderageDrinkingCosts.asp>

Scope of the Problem

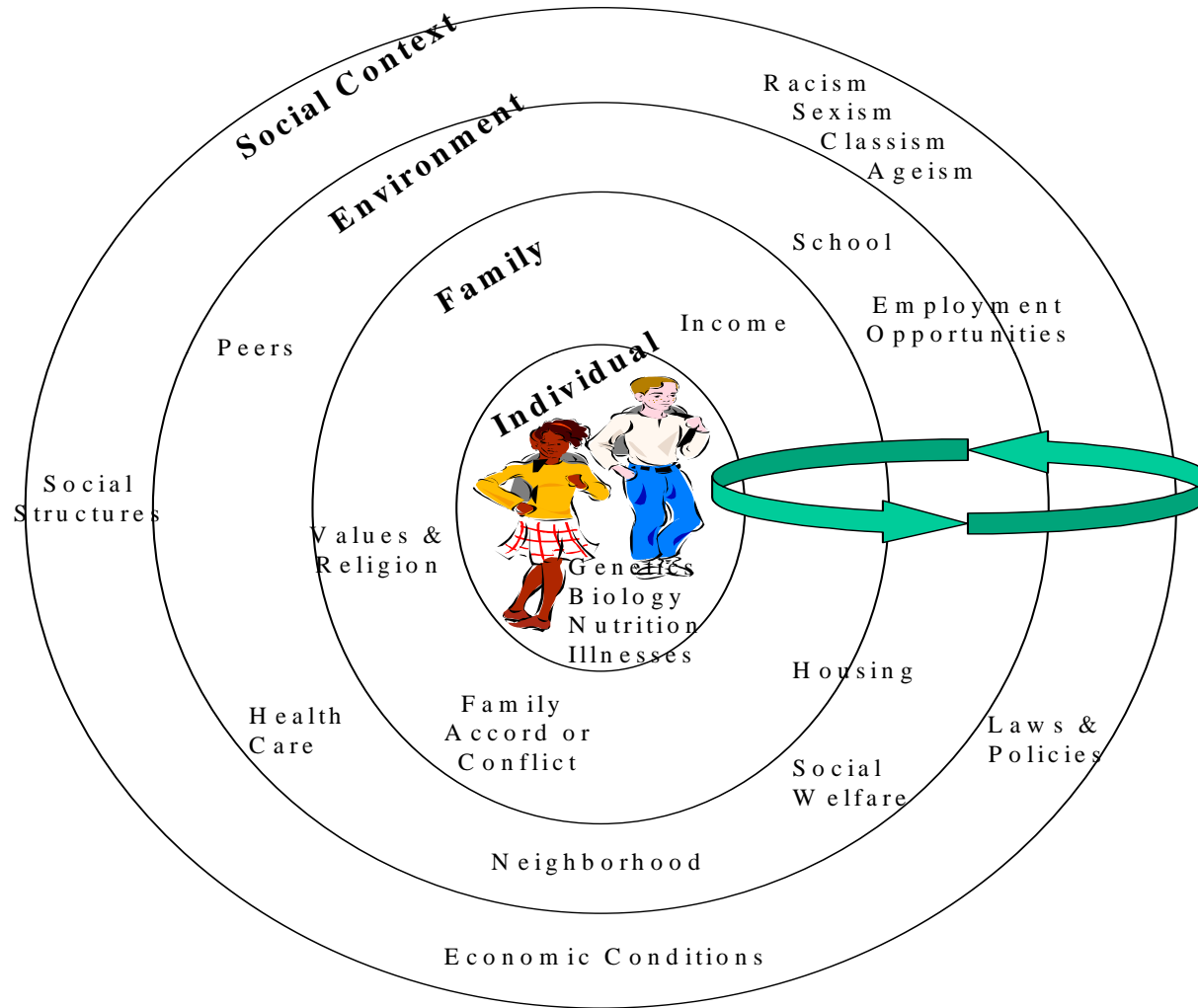
Surgeon General's Call to Action to Prevent and Reduce Underage Drinking, 2007



- **Research on adolescent brain—new research shows the adolescent brain continues to develop into a person's mid to late 20s (Giedd, 2004)**
- **Highest prevalence alcohol dependence is among 18-20 year olds (Grant, et al., 2004)**
- **Early, and especially, early heaving drinking are associated with increased risk for adverse lifetime alcohol-related consequences (Hingson, et al., 2000, 2001, 2002)**
- **Research also showing more about how underage drinking is related to factors in the adolescent's environment, cultural issues, and individual characteristics**



The Biopsychosocial Process of Adolescent Development



Underage Drinking Interventions Should:

(Surgeon General's Call to Action to Prevent and Reduce Underage Drinking, 2007)



- **Change societal acceptance, norms, and expectations surrounding underage drinking**
- **Prevent adolescents from starting to drink**
- **Delay initiation of drinking**
- **Intervene early, especially with high-risk youth**
- **Reduce drinking and its negative consequences, including progression to alcohol use disorders, when initiation has occurred.**
- **Identify those with AUD who would benefit from additional interventions**



Traditional Approach to Interventions

Aimed at the Youth Seek to:

- **Change expectations, attitudes and intentions;**
- **Impart knowledge and skills;**
- **Provide motivation for youth to resist influences to drink**

Environmental interventions:

- **Seek to reduce opportunities for underage drinking**
 - **Increasing enforcement and penalties**
 - **Reducing community tolerance for underage alcohol use.**

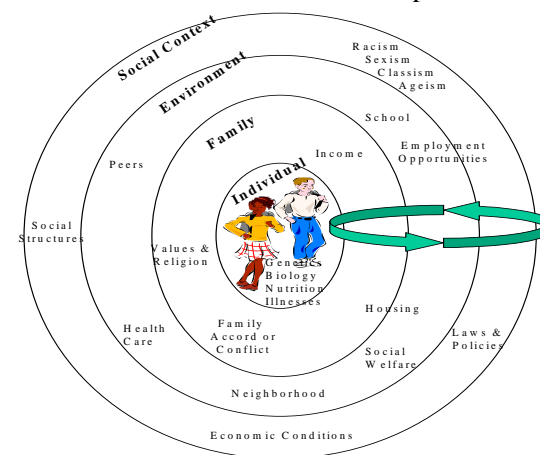


Developmental Approach to Interventions



- Retains goals of traditional approach
- Also incorporates an understanding of the dynamic and complex nature of adolescent development
 - Focuses on identifying and countering, weakening, or eliminating risk factors; and
 - Focuses on strengthening protective factors

The Biopsychosocial Process of Adolescent Development



Probation's Role in Underage Drinking Intervention



- **Become informed about the current underage drinking research and interventions**
- **Rethink our attitudes and biases about underage drinking offenders**
- **Develop an individualized assessment and case plan that evaluates and addresses the reasons youth and young adults participate in underage drinking and utilizes effective strategies to change their behaviors that are appropriate for their individual needs.**



Developing an Individualized Plan



May involve:

- **Initial screening**
- **Risk and need assessment**
- **Assessing risk and protective factors**
- **Further specialized assessment**



Benefits to Screening and Assessment



- **Helps determine level of supervision needed and prioritize case management services more effectively**
- **Helps allocate the use of limited resources more efficiently**
- **Helps determine what needs to address for a specific youth**
- **Helps target sanctions, interventions and services to meet the needs of youth more effectively**



Less Effective Interventions/Strategies



- **Fact-based educational approaches**
- **Scare tactics**
- **One-shot programs**
- **The (wrong) messages from people in recovery**
- **Clarification of values**
- **Teaching self-esteem**



More Effective Strategies



- **Teaching youth skills to cope with negative environmental and peer influences**
- **Family-based strategies**
- **Peer-based strategies**
- **Community-based strategies**



Enforcing Underage Drinking Laws (EUDL) Federal Initiative



- **State Block Grants**

Managed by OJJDP's State Relations Unit

- **Discretionary Funds**

- Managed by OJJDP's Demonstration Programs Unit

- Evaluation (Wake Forest University and NIAAA)

- Discretionary Grants

- **Training and Technical Assistance**

- Pacific Institute for Research and Evaluation (PIRE)



EUDL – State & Local Level



- **EUDL funding helps states:**
 - Promote community awareness of underage drinking
 - Encourage changes in norms regarding underage drinking
 - Develop organizational structures and relationships to support coordinated efforts
- **Local EUDL funding has helped:**
 - Increase enforcement efforts
 - Engage and train youth to be leaders in the effort
 - Increase prevention and public awareness efforts
 - Tackle challenging issues of alcohol consumption on college campuses



Why be involved in EUDL?



- Give input into legislation and policy
- Provide information to community coalitions on the effects certain legislation and policy on the front-end of system may have on the back-end of system
- Be involved in prevention efforts
- Other?



Upcoming Planned Resources from APPA



- **Guiding Principles document**
- **Technical Assistance**
 - Limited (phone, email, written correspondence)
 - Onsite (to selected demonstration sites)
- **Summary of lessons learned in demonstration sites**



For more information...

Tracy G. Mullins

Sr. Research Associate

**American Probation and
Parole Association**

P.O. Box 11910

Lexington, KY 40578

Phone: 859-244-8215

Fax: 859-244-8001

Email: tmullins@csg.org

Kimberly Cobb

Research Associate

**American Probation and
Parole Association**

P.O. Box 11910

Lexington, KY 40578

Phone: 859-244-8015

Fax: 859-244-8001

Email: kcobb@csg.org

APPA website: www.appa-net.org

